

# Jones MRx Label Report

# 8.3

The following document explains how to generate the Kroll MRx Label. The manual also goes into detail about the report selections and options available for pharmacy customization. Features and advantages of this label will also be discussed.



**Contents**

MRx Label Features and Options ..... 3

Generating the MRx Label Report ..... 4

    Selection Tab..... 6

    Selection 2 Tab..... 13

    Options/General ..... 17

    Options/Header ..... 18

    Options/Body ..... 20

    Options/Offsets..... 21

Kroll Helpdesk Information ..... 23

    Head Office – Toronto..... 23

    Western Canada – Edmonton..... 23

    Eastern Canada – Dartmouth..... 23

### MRx Label Features and Options

The **MRx Label Report** is created in cooperation with **Jones Packaging Inc.** to accommodate the launch of their new packaging label. The MRx Label is best described as a cross between Kroll's Compliance Label which generates a medication "grid" (See Figure 1), and the Dispill Label which prints drug information on individual cells (See Figure 2). The MRx label report brings together the best of both worlds. This label is created for a weekly interval where days are represented by the seven **rows** in the label. The pass times are represented by **columns**.

Test,Label						
Jones Packaging Inc. Toronto ON (416) 111-1111						
Rx#	Form	Drug	8:00	12:00	17:00	21:00
Filldate	Mfr	Directions	Init	Description		
DIN	REFILL					
1000012 14-Jan-2010 02270528	TAB NPC 0	28Diovan40mg TAKE1TABLETONCEDAILY	KC	1		
				Yell Ovaloid Tab "00"/"NVR"		
1000011 14-Jan-2010 02239941	CAP PFI 0	28Celebrex00mg TAKE1CAPSULEONCEADAY	KC		1	
				White/Blue Cap 7/67 100		
1000010 14-Jan-2010 00605751	TAB WTR 0	84Acetaminopher825mg TAKE1TABLET3TIMESADAYASNEEDED	KC	1	1	1
1000009 14-Jan-2010 02275031	CAP NOP 0	28Novo-VenlafaxineXR75mg TAKE1CAPSULEONCEADAY	KC	1		
				Beige Cap "N"/75		
1000008 14-Jan-2010 00896411	TAB PMS 0	84Pms-Sennosides8.6mg TAKE1TABLET3TIMESADAY	KC	1	1	1
				Light Blue Round Pms 411		
1000007 14-Jan-2010 02245209	TAB APX 0	28Apo-Lamotriginel00mg TAKE1TABLETONCEDAILY	KC	1		
				Pch Shld-ShpdLAM/100/APO		
1000006 14-Jan-2010 02230711	TAB PFC 0	28Lipitor10mg TAKE1TABLETONCEDAILY	KC			1
				White Oval Tab PO 155 10		
1000005 14-Jan-2010 02242924	TAB APX 0	56Apo-Warfarin1mg TAKE1TABLETTWICEDAILY	KC	1		1
				Pnk Rnd Tab/APO/"WAR"/1		
1000004 14-Jan-2010 02239864	CAP APX 0	28Apo-Feno-Micra200mg ASDIRECTED	KC	1		
				Orange Cap Apo 200		
1000003 14-Jan-2010 02263254	TAB LJN 0	28Cipralext20mg ASDIRECTED	KC			1
				Whit Oval Tab/EN		
1000002 14-Jan-2010 02239092	TAB AZC 0	28Atacand16mg TAKE1TABLETONCEDAILY	KC		1	
				Pnk Biconvex A /CH/016		
1000001 14-Jan-2010 02247011	TAB APX 0	28Apo-Simvastatin5mg TAKE1TABLETONCEDAILY	KC	1		
				Yel Shld Shpd Tab 5/APO		

Figure 1: Kroll Compliance label

Test,Label					20-Jan-2010	
Jones Packaging Inc. Toronto ON Ph: (416) 111-1111					Card 1	
Qty	Form	Drug Name 1	Generic	Mfr DIN	Instructions	Rx
7	TAB	Diovan 40mg	Valsartan	NPC 02270528	TAKE 1 TABLET ONCE DAILY	1000012 [0]
7	CAP	Celebrex 100mg	Celecoxib	PFI 02239941	TAKE 1 CAPSULE ONCE A DAY	1000011 [0]
21	TAB	Acetaminophen 325mg	Acetaminophen	WTR 00605751	TAKE 1 TABLET 3 TIMES A DAY AS NEEDED	1000010 [0]
7	CAP	Novo-Venlafaxine XR 75mg	Venlafaxine	NOP 02275031	TAKE 1 CAPSULE ONCE A DAY	1000009 [0]
21	TAB	Pms-Sennosides 8.6mg	Sennosides	PMS 00896411	TAKE 1 TABLET 3 TIMES A DAY	1000008 [0]
7	TAB	Apo-Lamotrigine 100mg	Lamotrigine	APX 02245209	TAKE 1 TABLET ONCE DAILY	1000007 [0]
7	TAB	Lipitor 10mg	AtorvastatinCalcium	PFC 02230711	TAKE 1 TABLET ONCE DAILY	1000006 [0]
14	TAB	Apo-Warfarin 1mg	Warfarin Sodium	APX 02242924	TAKE 1 TABLET TWICE DAILY	1000005 [0]
7	CAP	Apo-Feno-Micro 200mg	Fenofibrate	APX 02239864	AS DIRECTED	1000004 [0]
7	TAB	Cipralax 20mg	Escitalopram	LUN 02263254	AS DIRECTED	1000003 [0]
7	TAB	Atacand 16mg	CandesartanCilexetil	AZC 02239092	TAKE 1 TABLET ONCE DAILY	1000002 [0]
7	TAB	Apo-Simvastatin 5mg	Simvastatin	APX 02247011	TAKE 1 TABLET ONCE DAILY	1000001 [0]

Printed on: 20-Jan-2010 (for 1 weeks starting 20-Jan-2010) Page 1 of 1

26-Jan-2010			26-Jan-2010			26-Jan-2010			26-Jan-2010		
TestLabel	Tue	Morning	TestLabel	Tue	Noon	TestLabel	Tue	Dinner	TestLabel	Tue	Evening
1TAB Diovan40mg	1 TAB Acetaminophe...		1 TAB Acetaminophen 325mg			1 CAP Celebrex 100mg			1 TAB Pms-Sennosides 8.6mg		
1 CAP Novo-Venlafax...	1 TAB Pms-Sennosid...		1 TAB Pms-Sennosides 8.6mg			1 TAB Acetaminophen 325mg			1 TAB Lipitor 10mg		
1 TAB Apo-Lamotrigine 100mg						1 TAB Apo-Warfarin 1mg			1 TAB Cipralax 20mg		
1 TAB Apo-Warfarin 1mg						1 TAB Atacand 16mg					
1 CAP Apo-Feno-Micro 200mg											
1 TAB Apo-Simvastatin 5mg											

25-Jan-2010			25-Jan-2010			25-Jan-2010			25-Jan-2010		
TestLabel	Mon	Morning	TestLabel	Mon	Noon	TestLabel	Mon	Dinner	TestLabel	Mon	Evening
1TAB Diovan40mg	1 TAB Acetaminophe...		1 TAB Acetaminophen 325mg			1 CAP Celebrex 100mg			1 TAB Pms-Sennosides 8.6mg		
1 CAP Novo-Venlafax...	1 TAB Pms-Sennosid...		1 TAB Pms-Sennosides 8.6mg			1 TAB Acetaminophen 325mg			1 TAB Lipitor 10mg		
1 TAB Apo-Lamotrigine 100mg						1 TAB Apo-Warfarin 1mg			1 TAB Cipralax 20mg		
1 TAB Apo-Warfarin 1mg						1 TAB Atacand 16mg					
1 CAP Apo-Feno-Micro 200mg											
1 TAB Apo-Simvastatin 5mg											

24-Jan-2010			24-Jan-2010			24-Jan-2010			24-Jan-2010		
TestLabel	Sun	Morning	TestLabel	Sun	Noon	TestLabel	Sun	Dinner	TestLabel	Sun	Evening
1TAB Diovan40mg	1 TAB Acetaminophe...		1 TAB Acetaminophen 325mg			1 CAP Celebrex 100mg			1 TAB Pms-Sennosides 8.6mg		
1 CAP Novo-Venlafax...	1 TAB Pms-Sennosid...		1 TAB Pms-Sennosides 8.6mg			1 TAB Acetaminophen 325mg			1 TAB Lipitor 10mg		
1 TAB Apo-Lamotrigine 100mg						1 TAB Apo-Warfarin 1mg			1 TAB Cipralax 20mg		
1 TAB Apo-Warfarin 1mg						1 TAB Atacand 16mg					
1 CAP Apo-Feno-Micro 200mg											
1 TAB Apo-Simvastatin 5mg											

Figure 2: Kroll Dispill Label

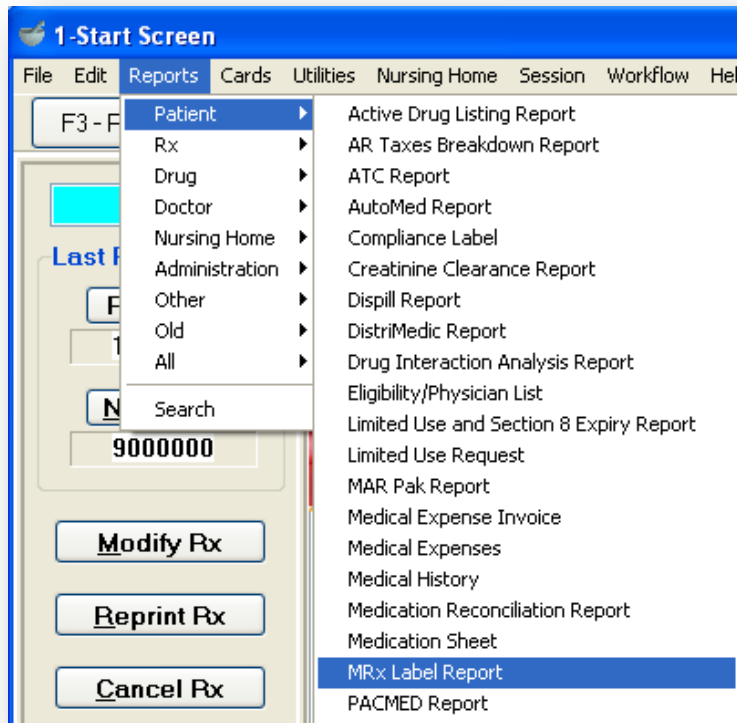
One of the main features of the MRx Label is its flexibility to be generated based on 2 or 4 pass times. For instance, the report can be generated with 2 pass times (e.g. morning and evening), or 4 pass times (e.g. morning, noon, dinner, evening). The main advantage of being able to choose between 2 or 4 pass times is the ability to save on packaging materials if desired.

In addition, options in the report allow customized messages to be printed on the label that can be used for warnings, patient information, pharmacy branding purposes, etc.

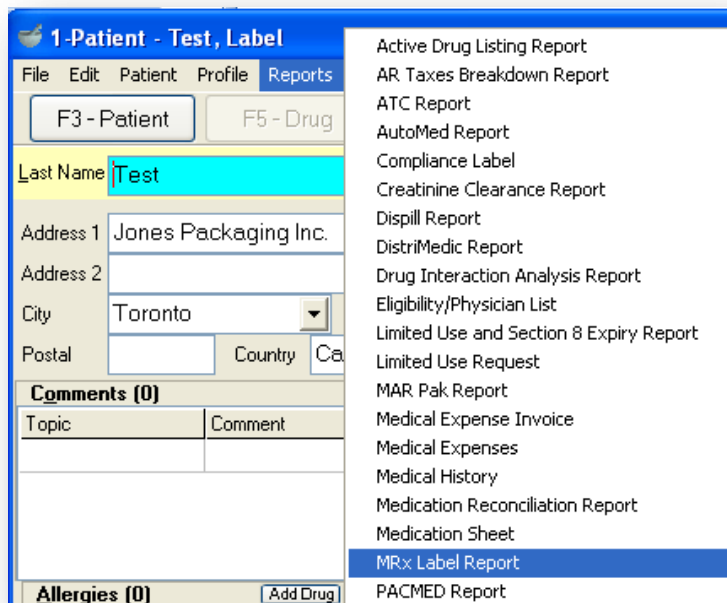
## Generating the MRx Label Report

The MRx Label report is available to all provinces and all customers on Kroll version 8.3.131.2 and higher. In the event that a store is on a version lower than 8.3.131.2, a program update can be run. The store can contact Kroll Software Helpdesk at 1-866-263-5876 extension 1 for assistance in upgrading their program version.

1. From the Kroll start screen (ALT+X), access **Reports → Patient → MRx Label Report**

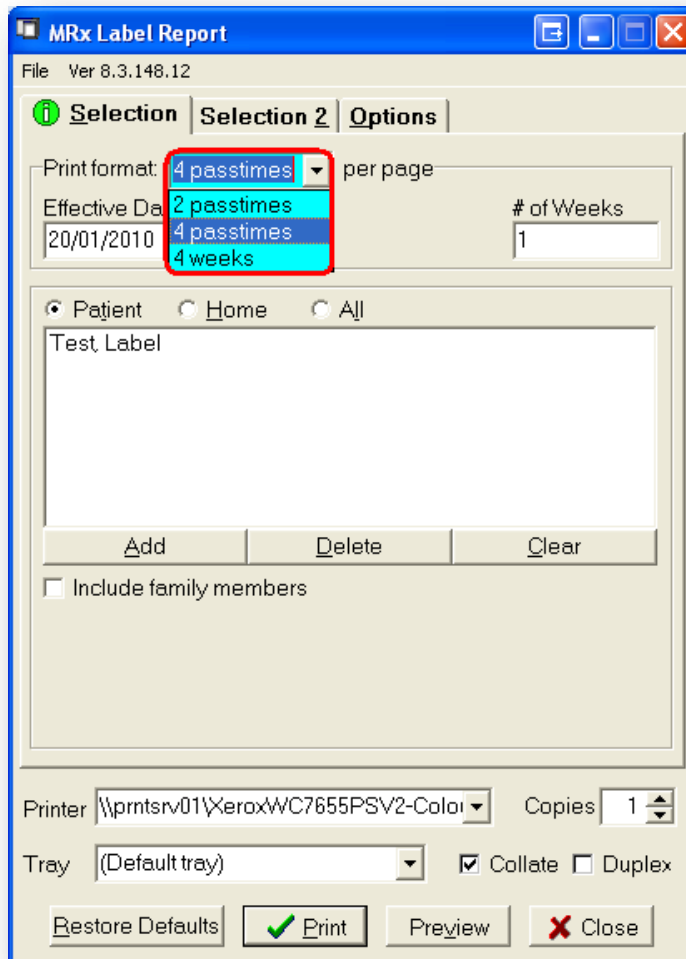


**NOTE:** The MRx Label can also be accessed from the patient card (F3-Patient) which will automatically insert said patient into the report parameters.



## Selection Tab

1. In the **Selection** tab, chose from 3 available print formats from the **Print format** dropdown menu.



- **2 Pass Times:**
  - This selection occupies half of the page (vertically segmented) and each half page represents 2 pass times for a 7 day interval.
  - The maximum number of Rx's that can fit on this configuration is 12 Rx's.
    - Prints 2 compliance labels on the header
    - Rxs 1 to 6 are printed in the bottom-header grid with Patient Info
    - Rxs 7 to 12 are printed in the top-header grid (Upside down grid) with Store info
  - Option to print header with 2 panels, 2 duplicated panels, or 4 panels is **NOT** available.
  - Messages option in a two panel header is **NOT** available







▪ **4 Panels**

- Maximum of 24 Rxs per page
- Prints 4 compliance labels (6 Rxs each)
- Rxs 1 to 6 are printed on bottom-left-header with patient info
- Rxs 7 to 12 are printed on bottom-right-header with store info
- Rxs 13 to 18 are printed on the top-left-header with patient info
- Rxs 19 to 24 are printed on the top-right-header with store info
- Messages option in a four-panel header is **NOT** available

Morning		Noon		Dinner		Evening	
TEST, LABEL		TEST, LABEL		TEST, LABEL		TEST, LABEL	
<p>1 Diovon 40mg TAB</p> <p>1 Acetaminophen 325mg TAB</p> <p>1 Novo-Ventafaxine XR 75mg CAP</p> <p>1 Pms-Sennosides 8.6mg TAB</p> <p>1 Apo-Lamotigine 100mg TAB</p> <p>1 Apo-Warfarin 1 mg TAB</p> <p>1 Apo-Feno-Micro 200mg CAP</p> <p>1 Apo-Simvastatin 5mg TAB</p>		<p>1 Acetaminophen 325mg TAB</p> <p>1 Pms-Sennosides 8.6mg TAB</p>		<p>1 Celebrex 100mg CAP</p> <p>1 Acetaminophen 325mg TAB</p> <p>1 Apo-Warfarin 1 mg TAB</p> <p>1 Atacand 16mg TAB</p>		<p>1 Pms-Sennosides 8.6mg TAB</p> <p>1 Lipitor 10mg TAB</p> <p>1 Cipralex 20mg TAB</p>	
<b>Jan26/2010-Tue.Morning</b>		<b>Jan26/2010-Tue.Noon</b>		<b>Jan26/2010-Tue.Dinner</b>		<b>Jan26/2010-Tue.Evening</b>	
TEST, LABEL		TEST, LABEL		TEST, LABEL		TEST, LABEL	

Morning		Noon		Dinner		Evening	
TEST, LABEL		TEST, LABEL		TEST, LABEL		TEST, LABEL	
<p>1 Diovon 40mg TAB</p> <p>1 Acetaminophen 325mg TAB</p> <p>1 Novo-Ventafaxine XR 75mg CAP</p> <p>1 Pms-Sennosides 8.6mg TAB</p> <p>1 Apo-Lamotigine 100mg TAB</p> <p>1 Apo-Warfarin 1 mg TAB</p> <p>1 Apo-Feno-Micro 200mg CAP</p> <p>1 Apo-Simvastatin 5mg TAB</p>		<p>1 Acetaminophen 325mg TAB</p> <p>1 Pms-Sennosides 8.6mg TAB</p>		<p>1 Celebrex 100mg CAP</p> <p>1 Acetaminophen 325mg TAB</p> <p>1 Apo-Warfarin 1 mg TAB</p> <p>1 Atacand 16mg TAB</p>		<p>1 Pms-Sennosides 8.6mg TAB</p> <p>1 Lipitor 10mg TAB</p> <p>1 Cipralex 20mg TAB</p>	
<b>Jan26/2010-Tue.Morning</b>		<b>Jan26/2010-Tue.Noon</b>		<b>Jan26/2010-Tue.Dinner</b>		<b>Jan26/2010-Tue.Evening</b>	
TEST, LABEL		TEST, LABEL		TEST, LABEL		TEST, LABEL	

**4 Weeks:**

- This selection occupies the whole page and each page represents **one pass time** for a **4 week** interval (i.e. one card for each pass time).
- The maximum number of Rx's that can fit on one label is 24 prescriptions.
- Pass times option (i.e. 2 or 4 pass times) are **NOT** available as each label represents **one passtime**.
- Pass times are represented by what is entered on the NH (ALT+N) screen or the Unit Dose (CTRL+U) screen of the Rx filling card.
  - **NOTE: ALL** pastimes from the NH (ALT+N) screen in the Rx filling card are honored and printed.
- Option to print header with 2 panels, 2 duplicated panels, or 4 panels is available.
- Messages option in header is available for the 2 panel configuration.

**Morning - Week 1**

Rx #	Form	Drug	Physician	Init	MORN	NOON	DINN	EVEN
1000012	TAB	Diovan 40mg	Dr. Test, Doctor	KC	1			
1000010	TAB	Acetaminophen 325mg	Dr. Test, Doctor	KC	1	1	1	
1000009	CAP	Novo-Venlafaxine XR 75mg	Dr. Test, Doctor	KC	1			
1000008	TAB	Pms-Sennosides 8.6mg	Dr. Test, Doctor	KC	1	1		1
1000007	TAB	Apo-Lamotrigine 100mg	Dr. Test, Doctor	KC	1			
1000005	TAB	Apo-Warfarin 1 mg	Dr. Test, Doctor	KC	1		1	

**Morning - Week 2**

Rx #	Form	Drug	Physician	Init	MORN	NOON	DINN	EVEN
1000012	TAB	Diovan 40mg	Dr. Test, Doctor	KC	1			
1000010	TAB	Acetaminophen 325mg	Dr. Test, Doctor	KC	1	1	1	
1000009	CAP	Novo-Venlafaxine XR 75mg	Dr. Test, Doctor	KC	1			
1000008	TAB	Pms-Sennosides 8.6mg	Dr. Test, Doctor	KC	1	1		1
1000007	TAB	Apo-Lamotrigine 100mg	Dr. Test, Doctor	KC	1			
1000005	TAB	Apo-Warfarin 1 mg	Dr. Test, Doctor	KC	1		1	

**Morning - Week 3**

Rx #	Form	Drug	Physician	Init	MORN	NOON	DINN	EVEN
1000004	CAP	Apo-Feno-Micro 200mg	Dr. Test, Doctor	KC	1			
1000001	TAB	Apo-Simvastatin 5mg	Dr. Test, Doctor	KC	1			

**Morning - Week 4**

Rx #	Form	Drug	Physician	Init	MORN	NOON	DINN	EVEN
1000012	TAB	Diovan 40mg	Dr. Test, Doctor	KC	1			
1000010	TAB	Acetaminophen 325mg	Dr. Test, Doctor	KC	1	1	1	
1000009	CAP	Novo-Venlafaxine XR 75mg	Dr. Test, Doctor	KC	1			
1000008	TAB	Pms-Sennosides 8.6mg	Dr. Test, Doctor	KC	1	1		1
1000007	TAB	Apo-Lamotrigine 100mg	Dr. Test, Doctor	KC	1			
1000005	TAB	Apo-Warfarin 1 mg	Dr. Test, Doctor	KC	1		1	

**Morning - Week 1**

Test,Label

1 Diovan 40mg TAB  
1 Acetaminophen 325mg TAB  
1 Novo-Venlafaxine XR 75mg CAP  
1 Pms-Sennosides 8.6mg TAB  
1 Apo-Lamotrigine 100mg TAB  
1 Apo-Warfarin 1 mg TAB  
1 Apo-Feno-Micro 200mg CAP  
1 Apo-Simvastatin 5mg TAB  
**Jan26/2010-Tue.Morning-Week1**

**Morning - Week 2**

Test,Label

1 Diovan 40mg TAB  
1 Acetaminophen 325mg TAB  
1 Novo-Venlafaxine XR 75mg CAP  
1 Pms-Sennosides 8.6mg TAB  
1 Apo-Lamotrigine 100mg TAB  
1 Apo-Warfarin 1 mg TAB  
1 Apo-Feno-Micro 200mg CAP  
1 Apo-Simvastatin 5mg TAB  
**Feb02/2010-Tue.Morning-Week2**

**Morning - Week 3**

Test,Label

1 Diovan 40mg TAB  
1 Acetaminophen 325mg TAB  
1 Novo-Venlafaxine XR 75mg CAP  
1 Pms-Sennosides 8.6mg TAB  
1 Apo-Lamotrigine 100mg TAB  
1 Apo-Warfarin 1 mg TAB  
1 Apo-Feno-Micro 200mg CAP  
1 Apo-Simvastatin 5mg TAB  
**Feb09/2010-Tue.Morning-Week3**

**Morning - Week 4**

Test,Label

1 Diovan 40mg TAB  
1 Acetaminophen 325mg TAB  
1 Novo-Venlafaxine XR 75mg CAP  
1 Pms-Sennosides 8.6mg TAB  
1 Apo-Lamotrigine 100mg TAB  
1 Apo-Warfarin 1 mg TAB  
1 Apo-Feno-Micro 200mg CAP  
1 Apo-Simvastatin 5mg TAB  
**Feb16/2010-Tue.Morning-Week4**

2. **Effective Date:** The first day of the patient's medication cycle.
3. **# Of Weeks:** The number of weeks that the medication is being prepared for.

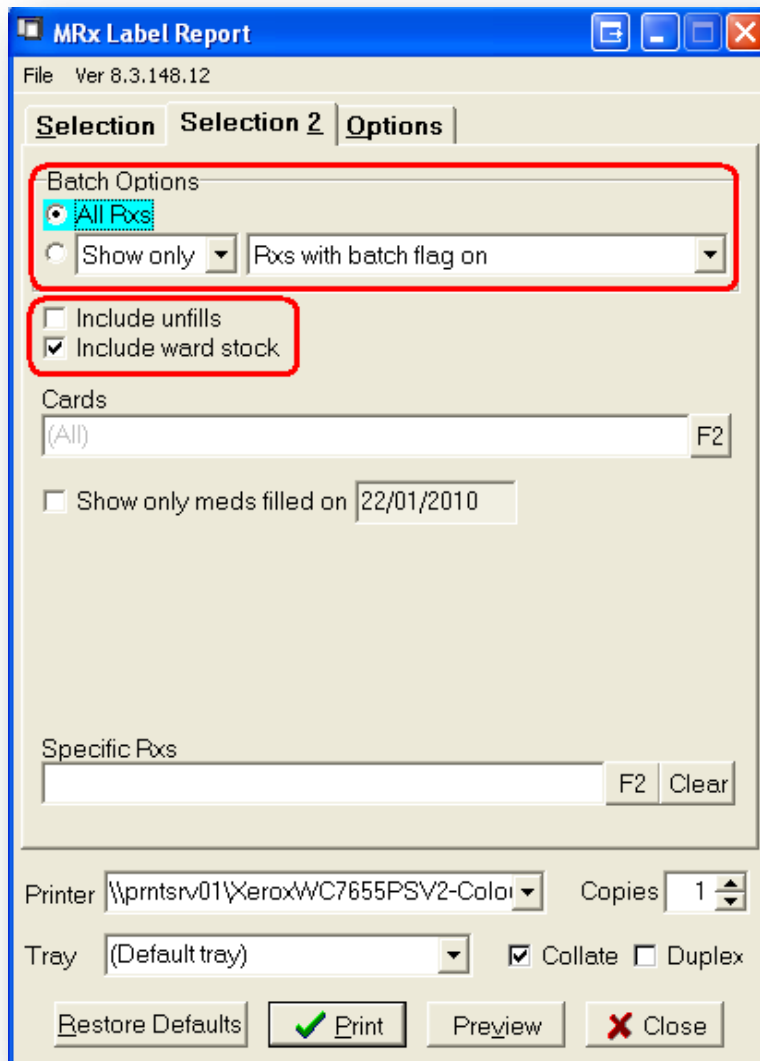
**NOTE:** If the print format is set to the **4 week** configuration, the **# of Weeks** field will be greyed out.

4. Select to generate the report for:
  - a. **Patient** - Click/Press **Add** to insert patient(s)
    - Click/Press **Delete** to remove a patient
    - Click/Press **Clear** to remove all patients listed
  - b. **Home** - Nursing Home and ward if available
  - c. **All** - All active patients in the entire database

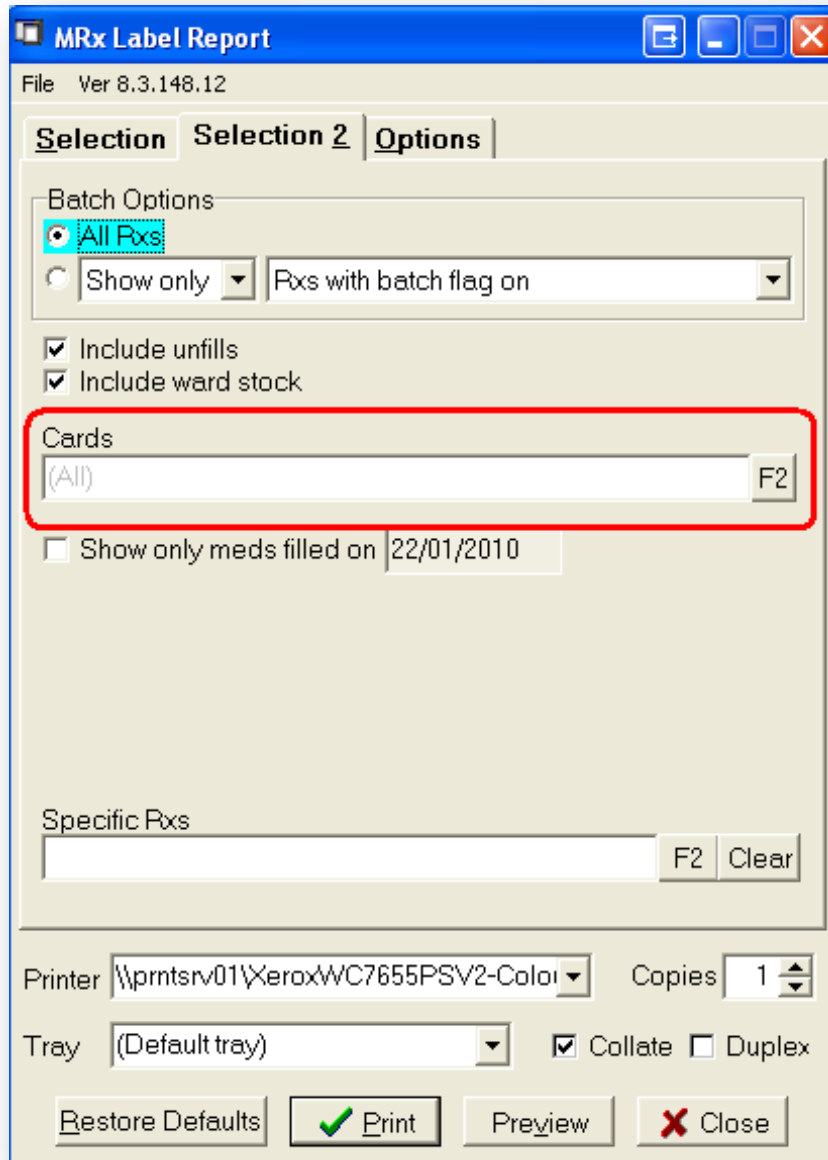
**NOTE:** The **Home** and **All** options allow further restriction of the results based on **Patient Group**.

Selection 2 Tab

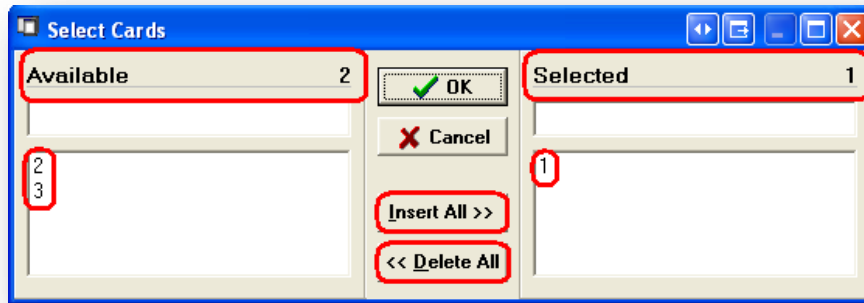
1. In the **Selection 2** tab, **Batch Options** are available for selection:
  - a. If the pharmacy **DOES NOT** do batch filling, the **Batch Option** must be selected as **All Rxs**.
  - b. If the pharmacy **DOES** do batch filling, there are options to **Show only** or **Exclude**:
    - Rxs with the batch flag on
    - Rxs in a batch
    - Rxs with the batch flag on and in a batch
2. **Include Unfills**: Check to include active-unfilled prescriptions from the patient profile to the MRx Label.
3. **Include ward stock**: Check to include prescriptions filled with drugs from the ward stock.



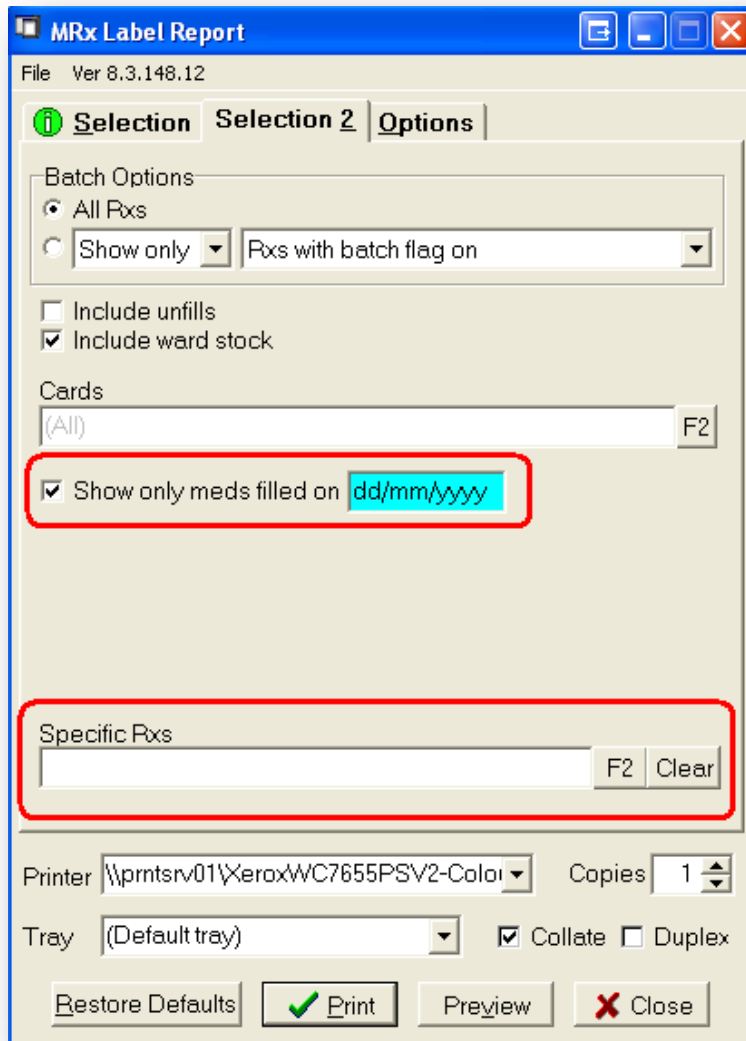
4. If a patient has more than one MRx label being printed from their profile (i.e. more than one card), the report can be configured to print a selection of those **cards** by clicking on **F2**.



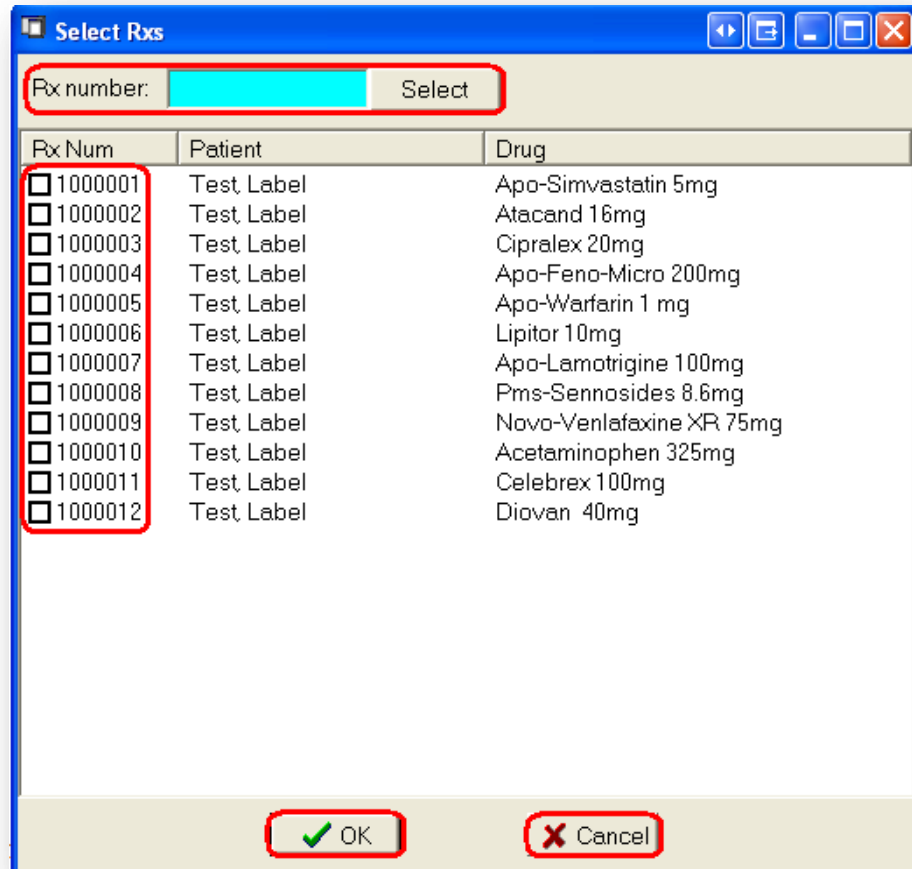
5. The **Select Cards** screen will appear. The right side shows the cards **available** for selection, and the left side shows the cards **selected** for printing.
  - a. Highlight one of the **available** cards with the mouse and click/press **OK** to insert into the **Selected** column
  - b. Click/Press **Insert All** to add all cards from the **Available** column.
  - c. Click/Press **Delete All** to remove all cards from the **Selected** column.



6. **Show Only Meds Filled on dd/mm/yy:** Check off when looking to show only active prescriptions filled on a particular date.
7. **Specific Rxs:** Press **F2** to insert specific prescriptions into the MRx Label Report (Click/Press **Clear** to remove all selected Rxs).



8. The **Select Rxs** screen will appear:
- a. Directly enter the prescription number in the **Rx number** field and click/press **Select**.
- OR**
- b. Mark the checkbox next to the prescriptions to be included in the label by using the **mouse** or the **spacebar**, and click/press **OK**.



## Options/General

The General tab controls overall configurations for the MRx label report such as number of prescriptions per page and passtime customization.

1. **Rxs per page:** The number of prescriptions that will fit on one MRx label.
  - A **2 Panel** or **2 Panel-Duplicate** configuration will print a maximum of 12 prescriptions per MRx label.
  - A **4 Panel** configuration will print a maximum of 24 prescriptions per MRx label.
2. **Rxs per cell:** The number of drugs that print on an individual pill pocket or cell. The maximum number of drugs listed on a cell for any configuration is 16.
3. **First drug name:** Select from **Default**, **Brand** or **Generic** name.
4. **4 Passtimes per page:** These fields are open and available for customization when the **Print Format** in the **Selection** tab is set to the **4 Passtimes** configuration.
5. **2 Passtimes per page:** These fields are open and available for customization when the **Print Format** in the **Selection** tab is set to the **2 Passtimes** configuration.

**NOTE:** If the **Print Format** in the **Selection** tab is set to **4 weeks**, all options to customize passtimes will be greyed out.
6. The order in which MRx labels print can be sorted in the **Sort By** field as follows:
  - a. Patient
  - b. Home/Ward/Room/Bed
  - c. Home/Ward/Patient
  - d. Doctor/Patient
  - e. Doctor/Home/Ward/Room/Bed
  - f. Doctor/Home/Ward/Patient
7. The medication sort order can be sorted in the **Med Sort** field as follows:
  - a. Rx #
  - b. Fill Date
  - c. MAR Sort Order

The screenshot shows the 'MRx Label Report' application window. The 'Options' tab is selected, and the 'General' sub-tab is active. The settings are as follows:

- Rx per page:** 12
- Rx per cell:** 16
- First drug name:** default
- 4 passtimes per page:**
  - Pass Time 1: Morning
  - Pass Time 2: Noon
  - Pass Time 3: Dinner
  - Pass Time 4: Evening
- 2 passtimes per page:**
  - Pass Time 1: Morning
  - Pass Time 2: Night
- Sort By:** Patient
- Med Sort:** Rx #

Printer: \\prntrsv01\XeroxWC7655PSV2-Color | Copies: 1

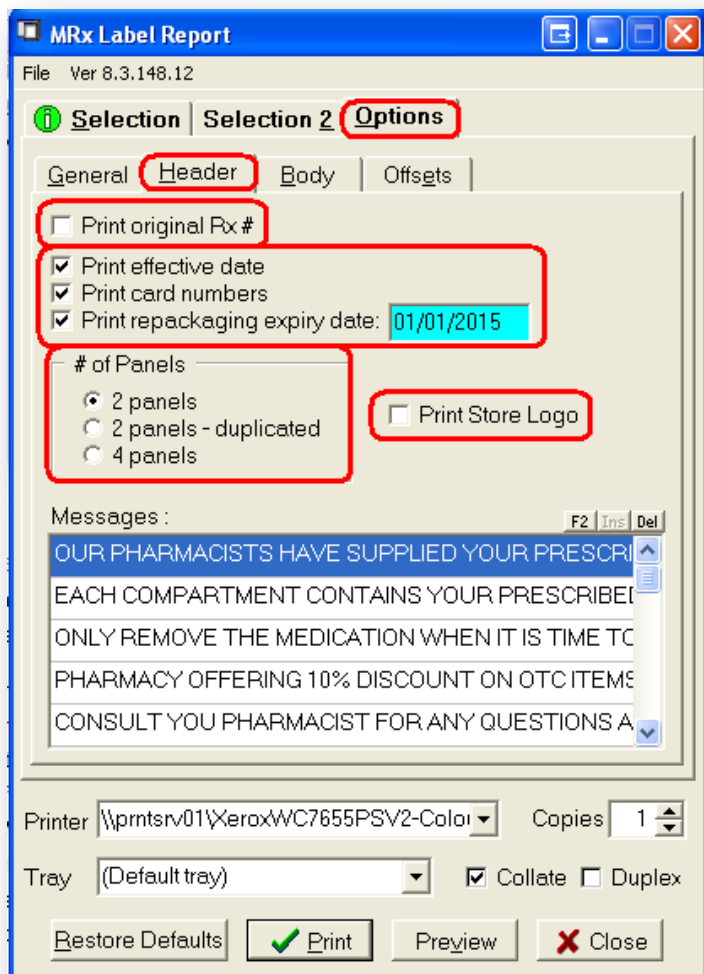
Tray: (Default tray) |  Collate |  Duplex

Buttons: Restore Defaults, Print, Preview, Close

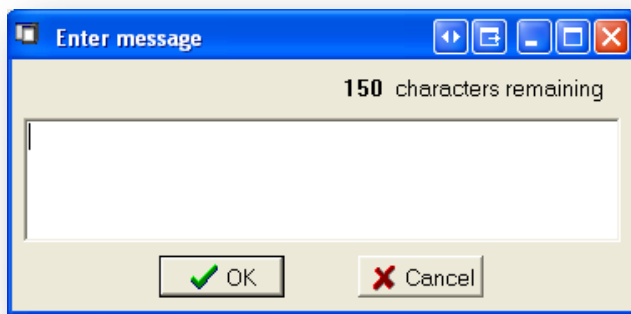
## Options/Header

The Header tab configures the header (i.e. top portion) of the label. It contains configurations for **Messages, Panel Selection** and other information being printed on the header.

1. **Print Original Rx #:** The MRx Label Report prints the most recent Rx number by default, but this is overridden when **Print Original Rx #** is checked.
2. **Print Effective Date:** Prints the date that the patient starts taking their cycle of meds at the bottom-left of the grid.
3. **Print Card Number:** Prints the Card Number on the bottom-middle of the grid.
4. **Print repackaging expiry date dd/mm/yy:** Enter the date that the pill pack will expire and it will print on the bottom-right of the grid.
5. Select the configuration for **# of Panels** (i.e. number of grids being printed on the header).
6. **Print Store Logo:** This option is only available for a **4 Passtime/2 Panels** or **4 Week/ 2 Panels** configuration and only when a Store Logo is loaded into the Kroll System Configurations.



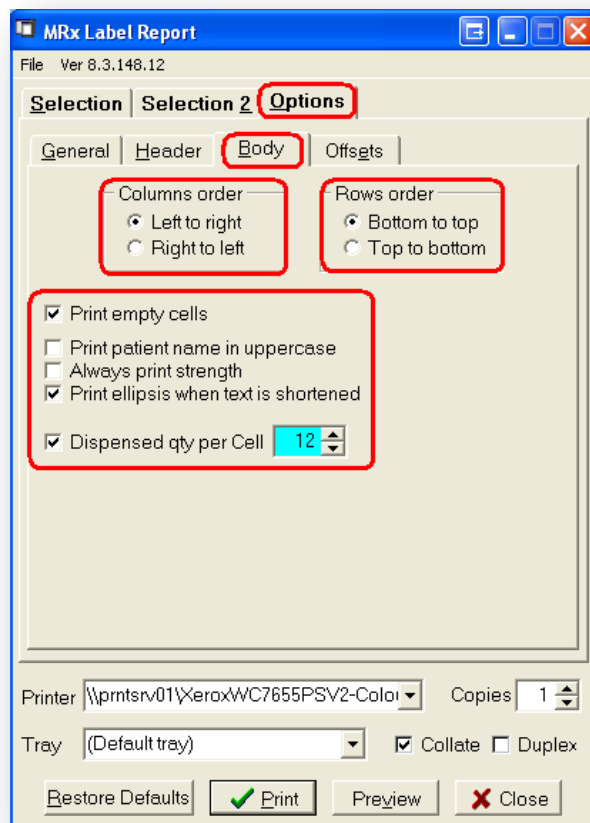
7. **Messages:** This option is only available for a **4 Passtime/2 Panels** or **4 Week-/2 Panels** configuration. A maximum of 6 messages can be added (3 messages/page).
  - i. **F2:** Edit an existing message
  - ii. **Ins:** Add a new message
  - iii. **Del:** Delete an existing message



## Options/Body

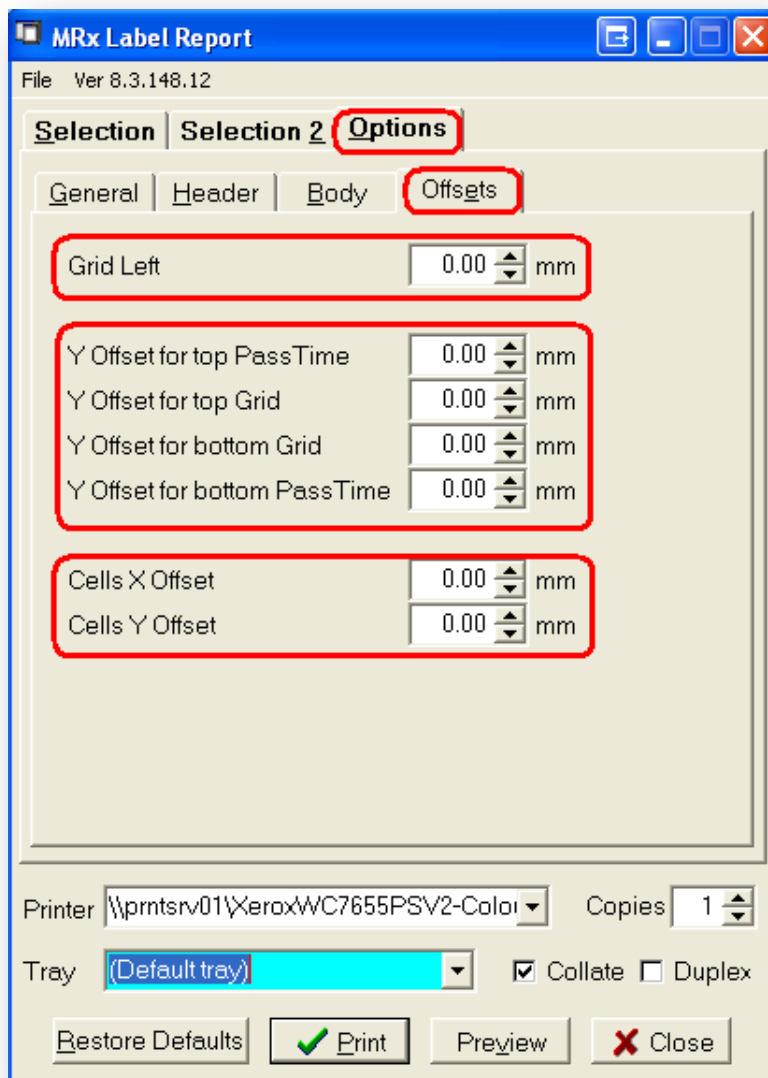
1. **Columns order:** Option to read pastimes columns from **Left to right** or **Right to left**
2. **Rows order:** Option to read cells from **Bottom to top** or **Top to bottom**
3. **Print empty cells:**
  - a. If checked, cells without any drugs assigned to it will still show the date and patient name on the cells.
  - b. If unchecked, cells without any drugs assigned to it will be blank and will not show any patient or drug information.
4. **Print patient name in uppercase:** Check to print patient name in capital letters
5. **Always print strength:** Check to always print drug strength with drug name
6. **Print ellipsis when test is shortened:** When checked, drug names that do not fit in the cells will be indicated by ellipsis (...).
7. **Dispense qty per Cell:** The number entered into this field determines the physical maximum quantity of pills that can fit into a cell.

**Note:** If the quantity of pills assigned to the cell exceeds the number entered in the **Dispense qty per Cell** field, some prescriptions will not be printed.



## Options/Offsets

1. **Grid Left:** Moves the compliance grid left or right.
  - **Negative** number will move the compliance grid to the **left**
  - **Positive** number will move the compliance grid to the **right**
2. **Y Offset for top Pass Time:** Moves the **top** pass times up or down.
  - **Negative** number will move the pass time title **down**
  - **Positive** number will move the pass time title **up**
3. **Y Offset for top Grid:** Moves the **top** two compliance grids up or down
  - **Negative** numbers will move the grids **down**
  - **Positive** numbers will move the grids **up**
4. **Y Offsets for bottom Grid:** Moves the **bottom** two compliance grids up or down
  - **Negative** numbers will move the grids **down**
  - **Positive** numbers will move the grids **up**
5. **Y Offsets for bottom Pass Time:** Moves the **bottom** pass times up or down.
  - **Negative** number will move the pass time title **down**
  - **Positive** number will move the pass time title **up**
6. **Cell X Offset:** Moves the information printed on the cells left or right.
  - **Negative** number will move printed information on the cells to the **left**
  - **Positive** number will move printed information on the cells to the **right**
7. **Cells Y Offset:** Moves the information printed on the cells up or down.
  - **Negative** number will move printed information on the cells **down**
  - **Positive** number will move printed information on the cells **up**
8. Click **Preview** to view the label before it is printed.
9. Click **Print** or press **Enter** to print the report.



## Kroll Helpdesk Information

### Head Office – Toronto

220 Duncan Mills Road Suite 201  
Toronto, Ontario  
M3B 3J5  
Tel: 416-383-1010  
Toll Free: 1-800-263-5876  
Fax: 416-383-0001  
support@kroll.ca

### Western Canada – Edmonton

#313, 9622 – 42nd Avenue NW  
Edmonton, Alberta  
T6E 5Y4

### Eastern Canada – Dartmouth

33 Ochterloney Street, Suite 260  
Dartmouth, Nova Scotia  
B2Y 4P5